



ANTARCTIC LOPPET



CELEBRATE ANTARCTICA'S SKIING HISTORY



Cross-country skiing has a long and storied heritage in Antarctica. Amundsen's team was the first to reach the South Pole and their skiing ability was a key element to their success. In celebration of Antarctica's rich skiing history, ALE is proud to found the first Antarctic Loppet.

The term Loppet is Norwegian in origin and refers to a long-distance cross-country skiing event. Whether you are an elite athlete looking to push yourself in a new environment, or a cross-country skiing enthusiast seeking adventure on the White Continent, the Antarctic Loppet provides an incredible opportunity like no other.

ALE's exclusive travel itinerary offers guests the opportunity to learn from specially curated lectures, compete in the timed Antarctic cross-country skiing events, and have time to soak in the unique sights of the interior of Antarctica.

OVER 30 YEARS EXPLORING ANTARCTICA



Since our start in 1985 as Adventure Network International (ANI), **Antarctic Logistics and Expeditions (ALE)** has pioneered the Antarctic adventure industry.

We are the most experienced private operator on the continent with an impeccable safety record, a strong environmental ethic, and a desire to share the White Continent with other passionate explorers.

Find your next adventure with the most capable and reliable provider of Antarctic experiences.

SAMPLE ITINERARY



Arrival Day
Punta Arenas, Chile



Pre-departure Days
Welcome and Safety Briefing, and
Gear Checks



Day 1
Fly to Antarctica



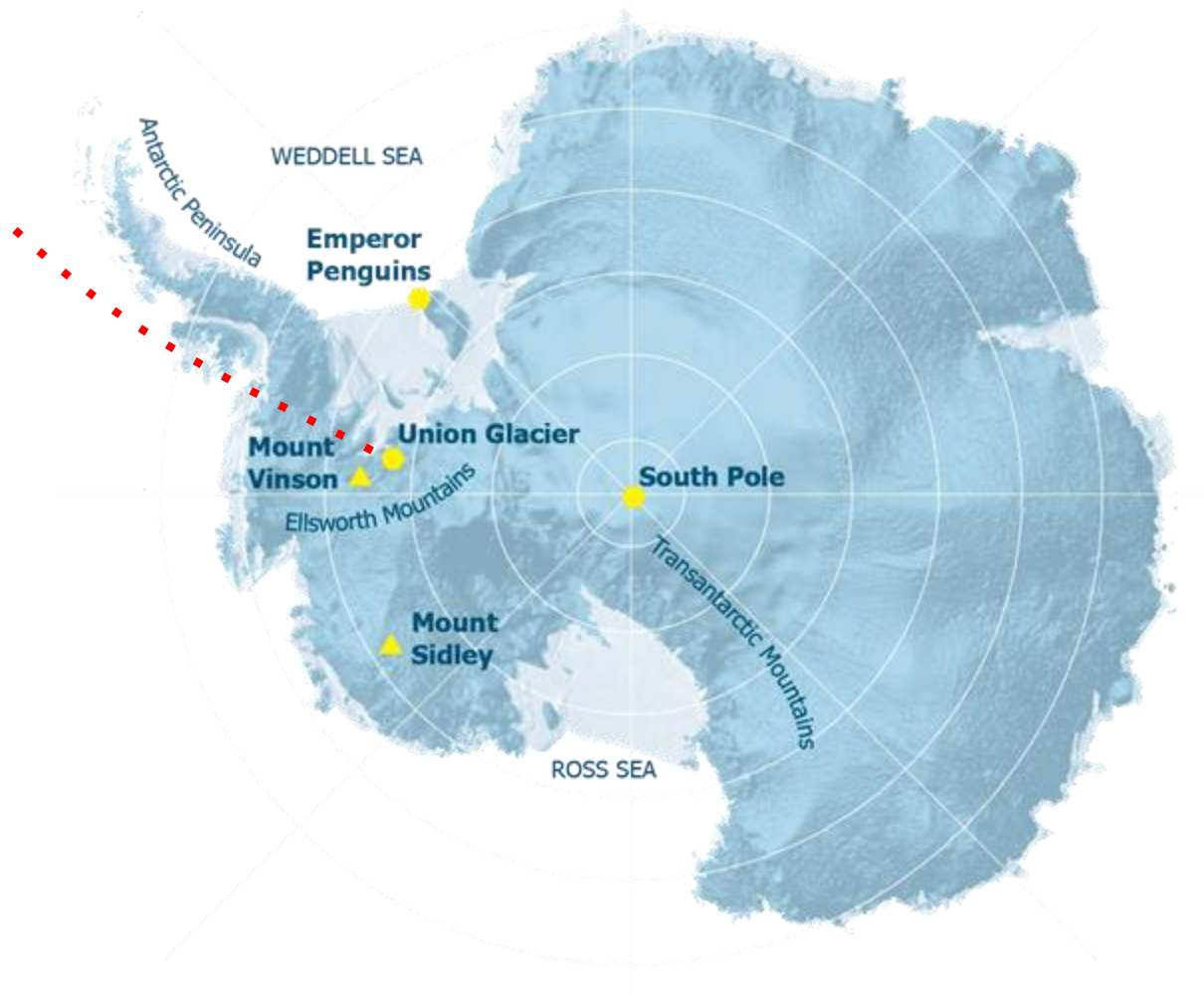
Day 2-4
Ski events, excursions and
lectures



Day 5
Return to Chile



Flexible Departure Day
Fly home



*All itineraries are subject to change based
on weather and flight conditions.*



At the Punta Arenas airport, you board our chartered jet for the 4 hour flight to Antarctica. Our route crosses the Drake Passage, then follows the west side of the Antarctic Peninsula and the spine of the Ellsworth Mountains. We land on a naturally occurring blue-ice runway on Union Glacier where you will take your first steps in Antarctica.

Climb aboard one of our specially-adapted vans for the 5mi (8km) shuttle to our main camp. Our friendly staff will provide a welcome tour of camp and show you to your tent.

FLY INTO ANTARCTICA

UNION GLACIER CAMP

The heart of logistics in West Antarctica. Our full-service private camp operates during the Antarctic summer and serves as a logistics hub, supporting private expeditions and National Antarctic Programs.



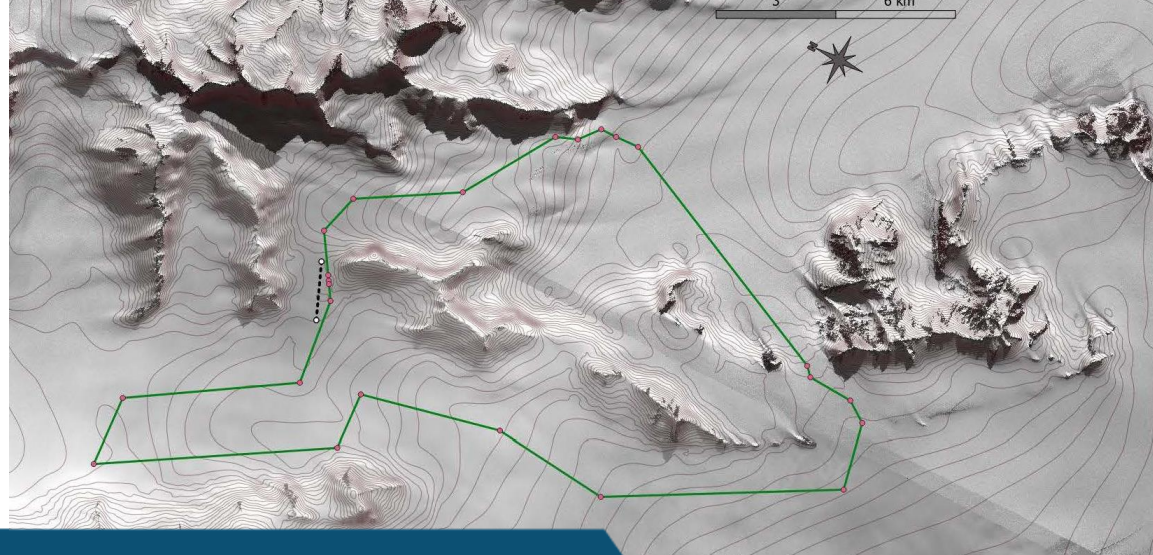
We can house up to 70 guests in our dual occupancy Clam Tents. These double-walled sleeping tents are designed to withstand Antarctic conditions with a high-tech nylon covering and durable aluminum frame that opens up like a clam shell.

The Fram, ALE's main dining tent, is the heart of our camp and serves as a gathering place for all of our guests. You'll have the opportunity to meet people from all over the world embarking on everything from a Mount Vinson summit attempt to a Ski South Pole expedition.



DINING & ACCOMMODATIONS





THREE COURSES: YOUR CHOICE OF CHALLENGE

All skiers are invited to attend and can choose to take part in one or all the events. When not skiing, guests are welcome to cheer on their teammates, explore Union Glacier, or attend educational lectures from world-renowned experts.

Current routes under consideration include:

- 10K & 20K loops at Union Glacier
- 50K loop over the Driscoll, Schneider, and Schanz glaciers

Since Union Glacier is on a dynamic glacier, ALE manages all our routes using a combination of satellite imagery and ground penetrating radar. ALE carefully maps out any areas of crevassing and plans routes accordingly to ensure the safety of our guests.



EXPLORE UNION GLACIER



Union Glacier is located in the spectacular and remote southern Ellsworth Mountains, surrounded by jagged peaks, dry valleys, and glistening icefalls.

When not skiing, each morning we will meet with you to discuss the options and organize activities tailored to the weather and your interests. Popular excursions include a visit to Elephant's Head, Charles Windscoop, or the Drake Icefall.

If you're looking for something more low-key, check out a book, movie, or game in our polar library.



INCLUSIONS & EXCLUSIONS



Weather

Possible severe storms with temperatures ranging from -10 °F to 25 °F (-23 °C to -4 °C).



Activity Level

Strenuous—vigorous activity at altitudes up to 1800 meters.



Requirements

Previous cross-country skiing experience is recommended as well as a good level of fitness.



What's Included

- Airport transfers in Punta Arenas, Chile
- Round trip flight to Antarctica from Punta Arenas
- Meals and tented accommodation in Antarctica
- Educational lecture series
- Participation in 10k, 20k, and 50k event
- Celebration event and Certificate of Achievement
- Checked luggage up to 55lb (25kg) plus skis



Not Included

- Insurance coverage—personal, medical, evacuation, or otherwise
- Commercial flights to and from Punta Arenas
- Airport transfers outside of Punta Arenas
- Meals and accommodation in Punta Arenas
- Additional flights within Antarctica
- Personal equipment and clothing
- Expenses incurred due to delays
- Luggage over 55lb (25kg)
- Satellite phone charges

OUR COMMITMENT TO SAFETY

Safety is our top priority and as the most experienced operator working deep in Antarctica we set a high safety standard.

Everything we do starts with creating a safe environment for our guests and our team. Antarctica is one of the most challenging places on the planet to operate due to its remoteness and harsh weather conditions. As a result, we are meticulous when it comes to logistics and safety protocols. All of our experiences whether skiing, climbing, filming Emperor Penguins or flying to the South Pole, start with detailed risk management and contingency plans.





Our mission is to set the highest possible environmental standards and implement best practices. We believe in responsible and sustainable tourism where our guests leave Antarctica with a greater appreciation of its remarkable natural values. We encourage a culture of environmental stewardship through training and our activities are planned to have the minimum effect on the environment.

As a **founding member** of the International Association of Antarctica Tour Operators (IAATO), we are committed to sustainable Antarctic tourism.

OUR ENVIRONMENTAL ETHIC





FIND YOUR NEXT ADVENTURE

info@antarctic-logistics.com

antarctic-logistics.com

+1.801.266.4876